

KYFAM

CHAPTER LOCATIONS



BLUEGRASS CHAPTER // CONTACT: DANETTE WILDER - wilderdj@sealinglife.com

Topy, Commonwealth Tool & Machine, CMWA, Florida Tile, Bullard, Webasto, Link-Belt, Toyota, LexAir, Lectrodryer, Denyo, Hitachi, Intelligrated, Heartland Automotive, Lincoln Manufacturing, Tarter Farm and Ranch Equipment

CUMBERLANDS CHAPTER // CONTACT: DONNIE SLAGLE - dslagle@ttna.com

Toyotetsu America, Inc., UGN, Inc., Aisin Automotive Casting, LLC, American Woodmark, Duraflame East, LLC, Camtech Manufacturing Solutions, Cobb Vantress, Tarter Farm & Ranch Equipment, Jones Plastic & Engineering, East Kentucky Power, Chism Automation, Cable Contracting Inc., Keystone Foods

GREATER LOUISVILLE CHAPTER // CONTACT: KENT SUITERS - kent.suiters@geappliances.com

Atlas Machine & Supply, Inc., Bigelow Tea Company, Clairant Corporation, D. D. Williamson & Co., Inc., Dana Incorporated, Ford Motor Company, GE Appliances (a Haier Company), Lantech, Linak US Inc., Nth/Works, Paradise Tomato Kitchen, Inc., Republic Conduit, Sabert Corporation, Universal Woods Inc.

GREATER OWENSBORO CHAPTER // CONTACT: FRANK ANDERSON - fanderson@sunwindows.com

ADM Industries, Big Rivers Electric, Castlen Steel, Daicel Safety Systems, Domtar, Hollison, Hunter Douglas, Kentron, Kimberly Clark, Metalsa, Miles Enterprises, MPD Industries, OMICO Plastics, Paramount Tool and Die, Perdue Farms, Precision Roll Grinders, Specialty Foods Group, Sun Windows, The Hines Group, Trifecta, TTMA, Unifirst, US Bank, Whitworth Tool and Die, Yager Materials

KYNDLE FAME CHAPTER // CONTACT: JEFF JONES - jeff.jones@vibracoustic.com

International Paper, Audubon Metals, Gibbs Die Casting, Vibracoustic, Big Rivers Electric, Hydro Aluminum, Air Hydro Power, Cresline Plastics, Dana, Accuride, Riverview Coal

LINCOLN TRAIL CHAPTER // CONTACT: NATHAN SHEWMAKER - nathan.shewmaker@tgky.com

AGC Automotive, Altec Industries, INC., Barber Cabinetry, Fuel Total Systems Ky. Plant, INOAC, Metalsa, Mouser Cabinetry, MTD Products, NPR of America, Plastikon, TG Kentucky LLC, Toyotomi, Wilbert Plastic Services

NORTHEAST KY CHAPTER // CONTACT: PETER FEIL - pfeil@stober.com

Regal Beloit, Cooper Standard, Morehead Wood Products, KDMK, Stober Drives, Tyson Foods, East Kentucky Power, SRG Global, The Walker Company, CTI Foods, Meadowview Regional, Summit Polymers, A Raymond Tinnerman, Precision Resource

NORTHERN KY CHAPTER // CONTACT: ANDREW FARRIS - andrew.farris@mubeausa.com

Bosch, Mubea, Linamar, Safran Messier-Bugatti Dowty, HAHN Automation, L'Oreal, Zotefoams, Steinkamp Molding, Nucor, Skilcraft, Diversified Composites, Krauss Maffei, Steinert US, Perfetti Van Melle

SOUTHCENTRAL CHAPTER // CONTACT: TYE BURKLOW - tburklow@fpik.com

Kobe Aluminum Automotive Products, Sumitomo Electrical Wiring Systems, Meritor, KAPSTONE Container, SUN Products/Henkel, Logan Aluminum, Franklin Precision Industry, RKW, Delta Faucet, Graham Packaging Company, Champion Petfoods, Bilstein, Fritz Winter, MAGNA, Froedge, Traughber Mechanical Services

WEST KY CHAPTER // CONTACT: RYAN SENTER - rsenter@hibbsinc.com

ACE Compressor, Inc., Ahlstrom Filtration, Baptist Health, Briggs & Stratton, Centrifugal Technologies, Comefri, Ebonite International, FP International, Gardner Denver, GE Aviation, Hibbs Electromechanical, Inc., Huhtamaki, Ingrams Water & Air, Integrated Metal Solutions, International Automotive Components, Iwis, Joe Leasure & Sons, Kenlake Foods, Land O'Frost, Martinrea, Metalsa, Par 4 Plastics, Plymouth Engineered Shapes, Progress Rail, Propulsys, Riken Elastomers, TGASK, T.RAD North America, Vanderbilt Chemical, Wabash National



KY FAME is part of the Kentucky Skills Network, a comprehensive workforce development system that helps companies find, prepare and train their employees.

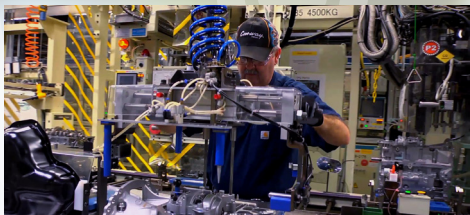
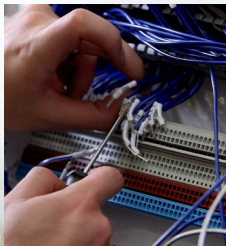
For general information contact Josh Benton at the Kentucky Cabinet for Economic Development.
joshua.benton@ky.gov • 502.564.7140

KYFAM

KENTUCKY FEDERATION FOR ADVANCED
MANUFACTURING EDUCATION

KYFAME.COM





KYFAME

The Kentucky Federation for Advanced Manufacturing Education (KY FAME) is a partnership of regional manufacturers whose purpose is to implement dual-track, apprenticeship-style training that will create a pipeline of highly skilled workers. The primary method to achieve this goal is through partnerships with local educational institutions to offer the Advanced Manufacturing Technician Program (AMT).

WHAT IS THE AMT PROGRAM?

AMT is a dual-track, five-semester program that matches education with continuous real-world working experience through a leading manufacturer. The AMT program combines proven workplace components of apprenticeship with the earn-and-learn model in subjects including electricity, fluid power, mechanics, fabrication and robotics. The result is paid work experience that includes hands-on application and the best practices of a world-class manufacturer. Students who complete this program receive the AMT certification as well as an Associate Degree in Applied Science.

PATHWAY OPTIONS

There is no doubt that students who participate in the KY FAME program have made a decision that will give them multiple career options. The Advanced Manufacturing Technician (AMT) degree is only the beginning. Upon completion of this associate degree, students have a variety of diverse options. Those who are ready to continue developing their craft can continue full-time employment. Others who wish to continue on with their education can seamlessly transition into a degreed program in business or engineering.

THE KY FAME DIFFERENCE

Students sponsored through KY FAME are not only receiving training for a future job, they also are obtaining a high-level technical education and practical job experience. KY FAME provides students with 18 months of relevant, paid job experience that matches the learning environment. As a result, KY FAME students are better prepared for their future career.

| SAMPLE OF A WHAT A WORK WEEK COULD LOOK LIKE | | | | | |
|--|------------------|--------|--------|------|------|
| | M | Tu | W | Th | F |
| 8-10 Hrs. | WORK | SCHOOL | SCHOOL | WORK | WORK |
| 2-4 Hrs. | HOMEWORK & STUDY | | | | |

Additionally, KY FAME develops programs that focus on the entire person. Traditional educational programs emphasize theory. KY FAME sponsored programs develop the needed technical skills and job experience as well as personal behaviors and core manufacturing skills. The end result is that KY FAME graduates are ready to hit the ground running in a manufacturing career or in furthering their education.

Technical Skills

Electricity
Fluid Power
Motor Controls
Maintaining Industrial Equipment
PLCs
Welding
Machining
Drawings
System Trouble Shooting
Robotics

Personal Behaviors

Attendance
Communication
Diligence
Interpersonal Relations & Initiative
Teamwork

Manufacturing Core Exercises

Safety Culture
Workplace Organization
Lean Manufacturing
Machinery Maintenance & Reliability
Problem Solving

KY FAME GIVES OPTIONS
FOR YOUR FUTURE.

AMT ASSOCIATE DEGREE

ZERO DEBT
WORK EXPERIENCE
68-71 CREDIT HOURS

CAREER

KY FAME graduates are in a great position to leverage career options. With over 1,800 hours already accumulated in on-the-job training and work experience, and the AMT associate degree in hand, one option for graduates is to continue working full time with their sponsoring employer. These are employers with whom the students have built strong relationships and who students know are truly

invested in them. Many of the graduates who continue down this path will move into advanced programs and are put on the fast track for advancement and potential leadership positions.

BUSINESS

After receiving their associate degree, many students choose to further their education and pursue a bachelor's degree, either right away, or after having worked a few years. Through the partnership with KY FAME and Northwood University, one path to achieve this goal is the Manufacturing Management Bachelor of Business Administration degree. The credits earned in AMT are all transferable toward

a degree, and courses can be completed online or on-site at Northwood's Kentucky locations. This program enhances the skills already learned and gives the student a new perspective on business, manufacturing management, floor level production and technical skills.

ENGINEERING

Another exciting option that graduates have is to work toward a degree in engineering with the University of Kentucky. Students who graduate from the KY FAME program before entering into UK's engineering program have a definite advantage. They have a much broader base of knowledge through their training as a multi-skilled technician. Students have a

strong command of working with their hands and working in the real world; skills that may not have been developed had the student entered the engineering program right out of high school. The combination of the two programs is what creates potentially the most sought out and well qualified new engineers in the job field.

